





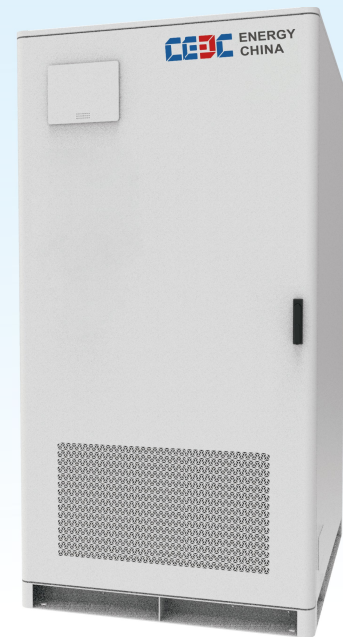
NEUTRON STAR EXPLORER

261KWh LIQUID COOLED COMMERCIAL & INDUSTRIAL ENERGY STORAGE SYSTEM

PRODUCT FEATURE

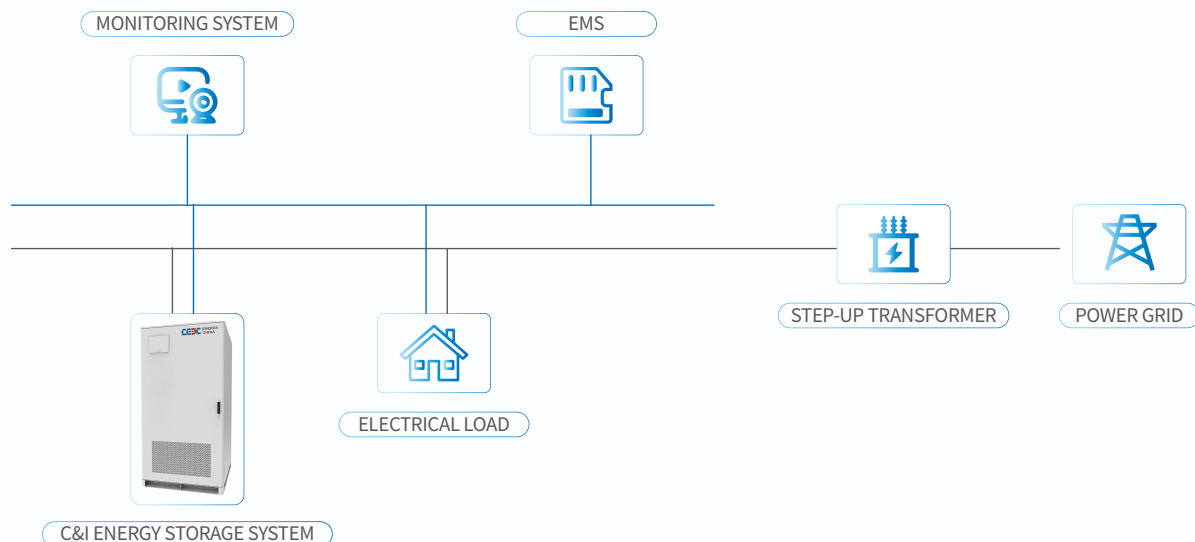
Modular design is adopted as a whole, which has the advantages of long service life, high integration, high expansibility, high reliability and flexible configuration. With the industrial and commercial energy management system(EMS), it can be widely used in grid-connected scenes such as frequency regulation, voltage support, peak-valley arbitrage, peak-load shifting, demand response, new energy grid connection, and other off-grid scenes such as black start, standby energy and microgrid.

-  All-in-one fire detection, efficient and safe
-  Highly integrated, smaller footprint and convenient maintenance
-  Modular design, flexible configuration and higher utilization rate
-  Anti-backflow function and AI warning



SOLUTION

— COMMUNICATION LINE — AC LINE



PARAMETER

| | | |
|-----------------------|---|---|
| DC SIDE | Cell Type | LFP 3.2V/314Ah |
| | System Battery Configuration | 260S1P |
| | Nominal Capacity | 261.24kWh |
| | Nominal Voltage Range | 650~936V |
| AC SIDE | Nominal Power | 125kW |
| | Max.THD of Current | ≤3% (rated power) |
| | Nominal Voltage | 400V |
| | Voltage Range | 380 / 400V (-15% ~ +15%) |
| | Nominal Frequency | 50 / 60Hz |
| | Frequency Range | 50 / 60 (-2.5 ~ +2.5) Hz |
| SYSTEM PARAMETER | Dimensions (W * H * D) | 1068mm * 2226.5mm * 1340mm |
| | Weight | ~2.6t |
| | Degree of Protection | IP54 |
| | Auxiliary Power Supply | Internal Power Supply / External Power Supply (optional) |
| | Anti-corrosion Degree | C4 / C5 (optional) |
| | Operation Humidity Range | 0 ~ 95% |
| | Operation Temperature Range | -30°C ~ +55°C (> 45°C derating) |
| | Maximum Operation Altitude | 5000m |
| | Temperature Control Method | High-efficiency Liquid Cooling |
| | Noise | ≤75dB |
| | Fire Suppression System | Aerosol |
| | Communication Interfaces | CAN, RS485, RJ45 |
| | Communication Protocol | CAN2.0B, IEC61850, Modbus TCP, Modbus RTU |
| | Standard | IEC62619, IEC 63056, IEC 62477-1, IEC 62040-1, IEC/UL 60730-1, UL 9540A, UN38.3, UN3536 |
| Application Scenarios | Smart Mining Areas, Isolated Islands, Urban Rooftops, Inland Farms, Industrial and Commercial Areas | |